



GenICE3000

Application Note #062 (AN062-V1.0)

AN

GenICE3000 Driver Guide

V1.0

November 2011

- ◆ CORERIVER Semiconductor reserves the right to make corrections, modifications, enhancements, improvements, and other changes to its products and services at any time.
- ◆ To discontinue any product or service, CORERIVER should inform customers of that before 3 months through its homepage.
- ◆ Customers should obtain the latest relevant information before placing orders and should verify that such information is current and complete.
- ◆ The CORERIVER products listed in this document are intended for usage in general electronics applications. These CORERIVER products are neither intended nor warranted for usage in equipment that requires extraordinarily high quality and/or reliability or a malfunction or failure of which may cause loss of human life or bodily injury..

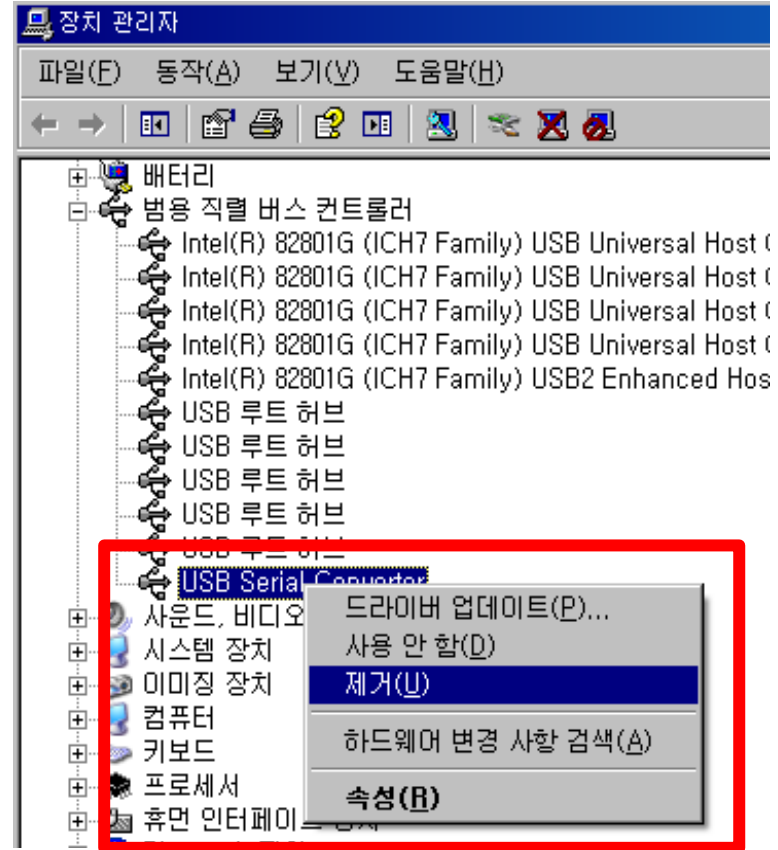
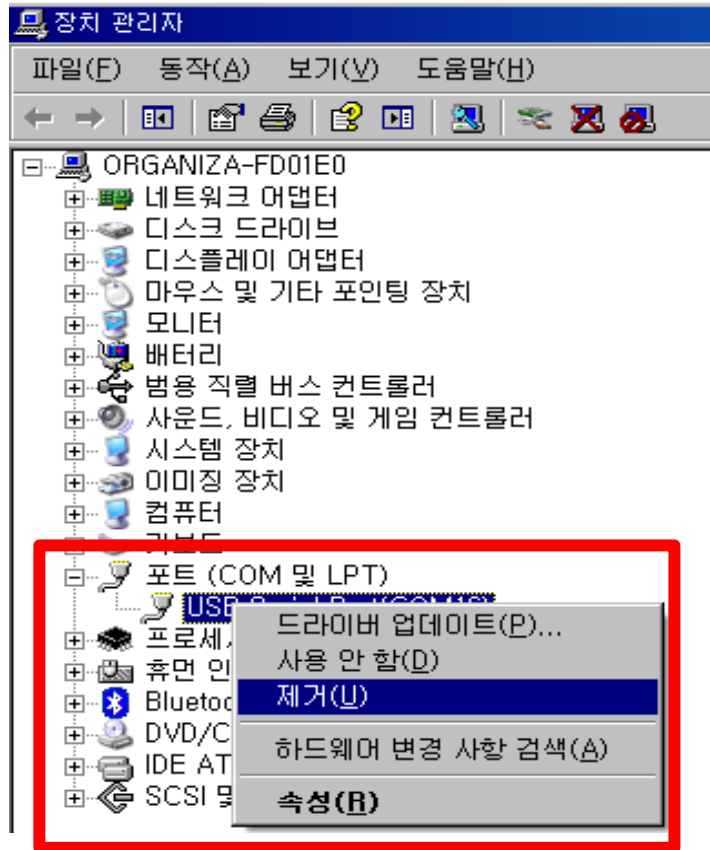
Description

◆ 목적

1. GenICE3000 Driver 충돌로 인한 문제 발생시 원활한 문제 해결을 위함.
2. 기타 Driver 삭제 시 지워지지 않는 문제 해결을 위함.

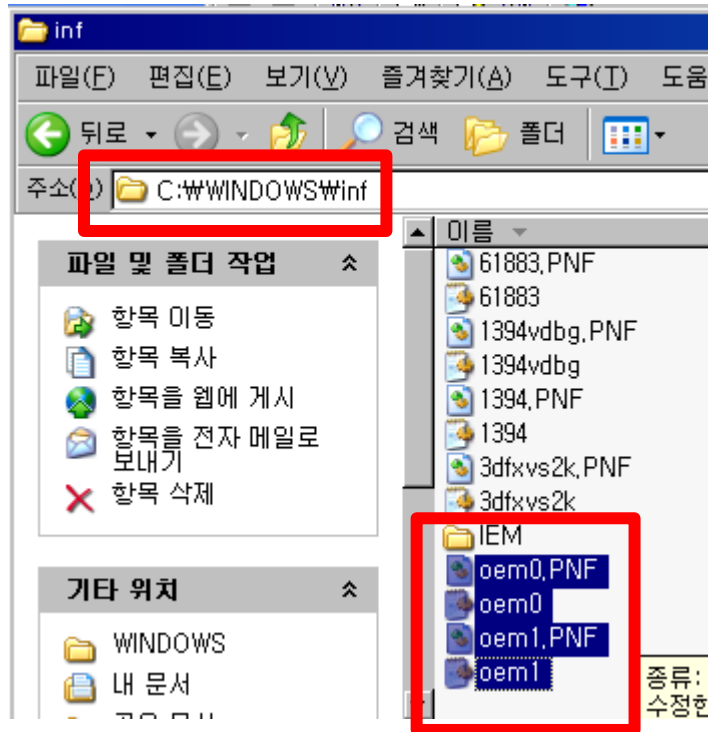
1. Deleting Device Driver

- ◆ 장치관리자에서 설치되었던 2개의 Driver를 제거 (USB & port)
: CORERIVER GenICE3000 or USB Serial Converter



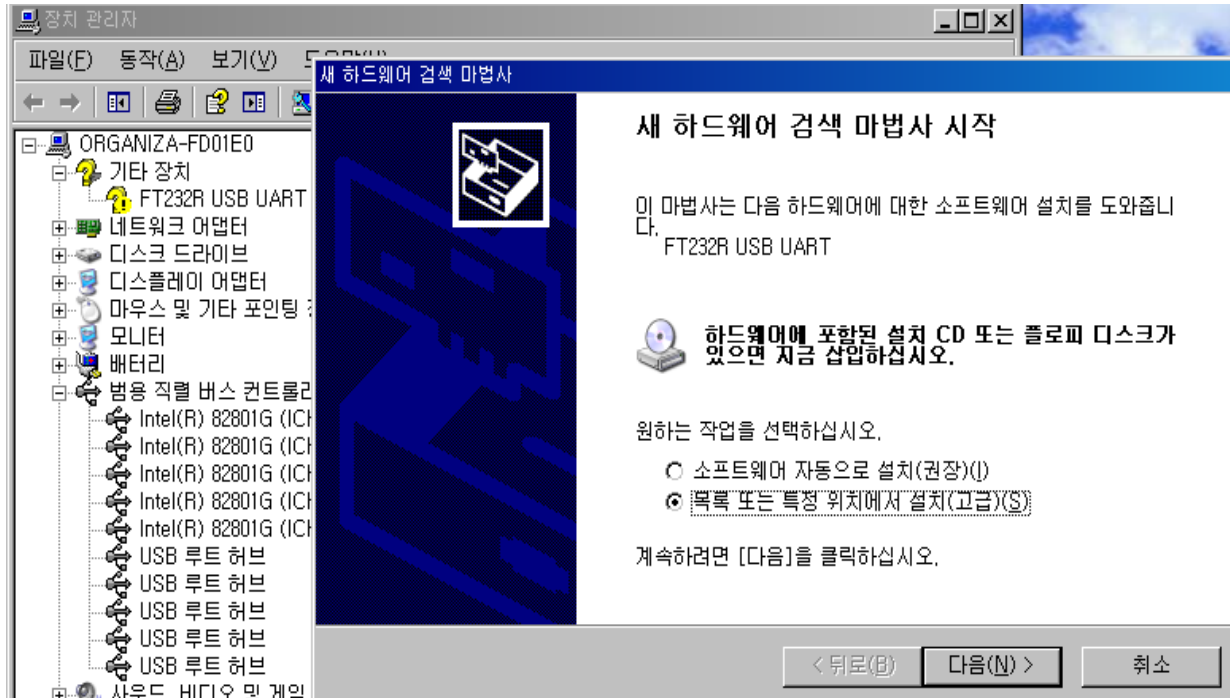
2. Deleting Driver Files

- ◆ 폴더옵션 -> 숨김 폴더 및 파일 표시 체크 후 다음의 경로에서 "oem*" file 삭제
: **C:\WINDOWS\inf**
(oem file 전체 삭제시 타 **Driver file**도 동시에 삭제되므로 추후
동일 **Device** 설치시 자동설치가 안될 수도 있음)



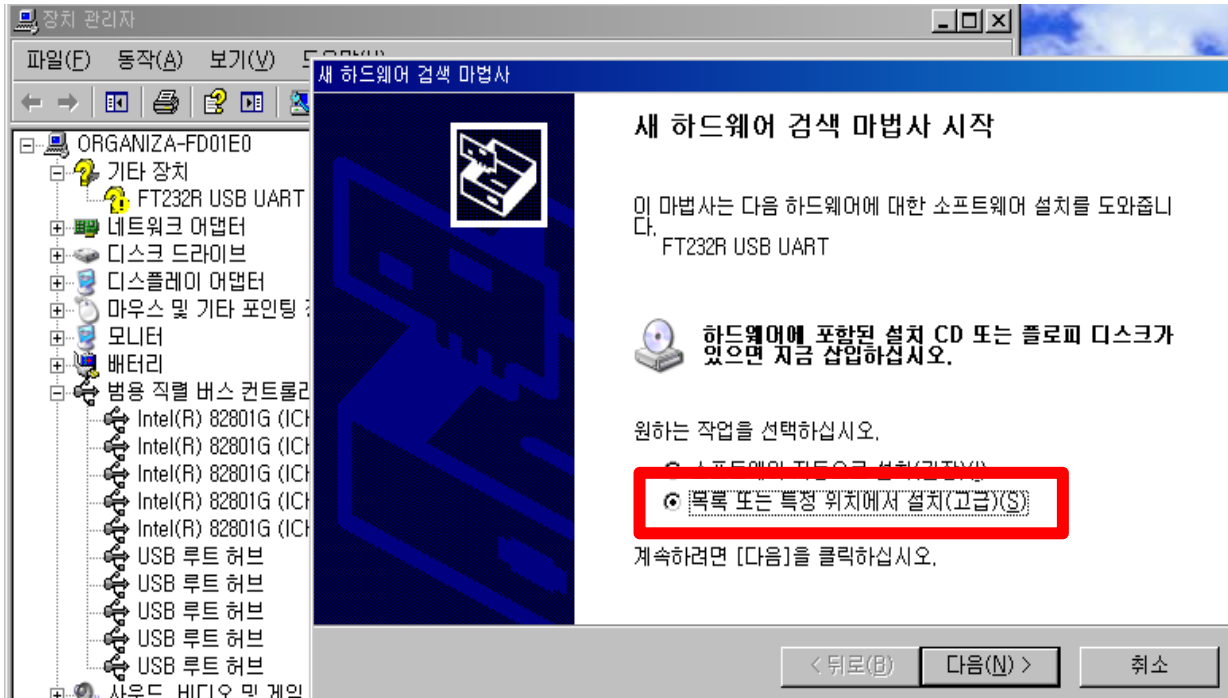
3. Installing Driver (1/2)

- ◆ GenICE3000 연결 시 자동으로 Driver를 설치하지 않고 검색 마법사가 시작됨.



3. Installing Driver (2/2)

- ◆ 다음의 경로에서 USB_PC_Driver file을 다운받아 설치
: www.coreriver.com/tool/tool.html



- ◆ 목록 또는 특정 위치에서 설치(고급) 선택 후 다운받은 file로 지정.



Thank you !!!

Web Site : <http://www.coreriver.com>

Sales : sales@coreriver.com

R&D : tech@coreriver.com